

NOTE: CONTROL SWITCHES IN SCHEMATIC ARE SHOWN SET FOR NORMAL WASH AT START OF AGITATION ON THE CAM CHART. MANUAL SWITCHES IN SCHEMATIC ARE SHOWN SET FOR WARM/COLD TEMP SELECTION. NUMBERS AND LETTERS INDICATE CORRESPONDING COMPONENT TERMINAL DESIGNATIONS.

DOUBLE LINES INDICATE BUSSING INSIDE TIMER AND SELECTOR SWITCH.  
○ SWITCH CONTACT  
○ TIMER SW TERM

OPEN   
CLOSED

TEMP SEL SW			
		TERMINALS	
		1-3	2-4 1-5
COLD/COLD			
WARM/COLD			
COOL/COLD			
HOT/COLD			

**⚠ WARNING: THIS MACHINE MUST BE ELECTRICALLY GROUNDING.**  
IT CAN BE GROUNDING THRU THE GROUNDING LEAD IN THE 3 PRONG POWER CORD. IF PLUGGED INTO A PROPERLY GROUNDING APPLIANCE OUTLET OR THRU A SEPARATE #18 OR LARGER WIRE FROM THE CABINET TO AN ESTABLISHED GROUND. IN ALL CASES THE GROUNDING METHOD MUST COMPLY WITH ANY LOCAL ELECTRICAL CODE REQUIREMENTS.

COLOR	SYM
BLACK	B
BROWN	C
RED	R
ORANGE	O
YELLOW	Y
GREEN	G
DK. BLUE	N
LT. BLUE	A
VIOLET	V
GRAY	S
WHITE	W
TAN	T
PINK	P
BARE	X

**WATER LEVEL SWITCH**  
BEFORE DISCONNECTING HOSE FROM WATER LEVEL SWITCH, BE SURE WATER LEVEL IN MACHINE IS BELOW BOTTOM OF WASH BASKET. AFTER RECONNECTING HOSE, PUT MACHINE IN SPIN FOR AT LEAST ONE MINUTE BEFORE CHECKING OPERATION OF SWITCH.

R3	R2	R1
R6	R5	R4
RX	CX	SX
R9	R8	R7
OB	TX	
R12	R11	R10
R15	R14	R13
	WR	
R18	R17	R16
NX	NW	WX
R21	R20	R19
	RB	
R24	R23	R22
BX	RB	VW

MOTOR INVERTER BOARD STATUS INDICATOR LIGHT CODES

NUMBER OF FLASHES	DESCRIPTION	ACTION
1 SECOND ON 1 SECOND OFF	NORMAL STANDBY	NORMAL STANDBY
.5 SECOND ON .5 SECOND OFF	NORMAL RUNNING	NORMAL RUNNING
1 FLASH	LONG STOP TIME	REPLACE MOTOR (BRAKE)
2 FLASH	SLIPPING BELT	CHECK BELT*
3 FLASH	CORRUPTED SOFTWARE	REPLACE MOTOR (SOFTWARE)
4 FLASH	MODE SHIFT CIRCUIT FAILED	CHECK MODE SHIFTER COIL*
5 FLASH	NOT IMPLEMENTED	REPLACE MOTOR
6 FLASH	LOCKED ROTOR	MAKE SURE SYSTEM IS FREE*
7 FLASH	LID SWITCH DID NOT OPEN	CHECK LIDSWITCH*
8 FLASH	MOTOR OVERHEATED	MAKE SURE SYSTEM IS FREE*
9 FLASH	BRAKE RESISTOR OPEN	REPLACE MOTOR (BRAKE)
ON 2,4,6,7 & 8 FLASH ERRORS IF NO SYSTEM FAILURES ARE FOUND, REPLACE MOTOR		

**CAUTION: TO SERVICE MACHINE, POWER MUST BE DISCONNECTED.**

# ⚠ WARNING TO REDUCE THE RISK OF ELECTRICAL SHOCK:

- The power must be disconnected before servicing by unplugging the machine or disconnecting the circuit breaker.
- The machine must be electrically grounded through the grounding lead in the three-prong power cord. The cord must be plugged into a properly installed and grounded appliance outlet. If local codes require an additional ground connection, use a 16-gauge or larger wire to connect the washer cabinet to an established ground. In all cases the grounding method must comply with all local codes and ordinances.

## IMPORTANT - RECONNECT ALL GROUNDED DEVICES

IF GROUNDING WIRES, SCREWS, STRAPS, CLIPS, NUTS OR WASHERS USED TO COMPLETE A PATH TO GROUND ARE REMOVED FOR SERVICE, THEY MUST BE RETURNED TO THEIR ORIGINAL POSITION AND PROPERLY FASTENED.

## IMPORTANT SAFETY NOTICE

THIS INFORMATION IS INTENDED FOR USE BY INDIVIDUALS POSSESSING ADEQUATE BACK-GROUNDS OF ELECTRICAL, ELECTRONIC AND MECHANICAL EXPERIENCE. ANY ATTEMPT TO REPAIR A MAJOR APPLIANCE MAY RESULT IN PERSONAL INJURY AND PROPERTY DAMAGE. THE MANUFACTURER OR SELLER CANNOT BE RESPONSIBLE FOR THE INTERPRETATION OF THIS INFORMATION, NOR CAN IT ASSUME ANY LIABILITY IN CONNECTION WITH ITS USE.

## WATER LEVEL SWITCH

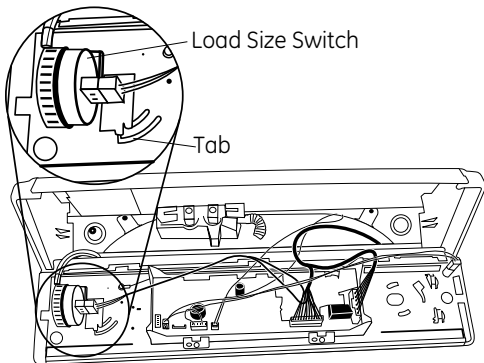
BEFORE DISCONNECTING HOSE FROM WATER LEVEL SWITCH, BE SURE WATER LEVEL IN MACHINE IS BELOW BOTTOM OF WASH BASKET. AFTER RECONNECTING HOSE, PUT MACHINE IN SPIN FOR AT LEAST ONE MINUTE BEFORE CHECKING OPERATION OF SWITCH.

## 1 To Remove Control Panel:

1. Remove 4 screws along top of control panel.

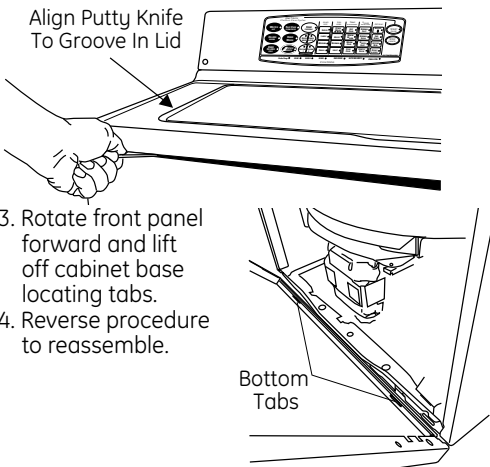
## 2 To Remove Load Size Switch in Control Panel:

1. Follow step 1.
2. Using screwdriver, gently depress tab and turn load size switch counter clockwise to remove from keyhole.
3. Reverse procedure to reinstall.



## 3 To Remove Front Panel:

1. Locate two spring clips between cover and front panel, by aligning putty knife with groove on either side of lid and cover. (See illustration).
2. Insert putty knife and push forward to release clips.

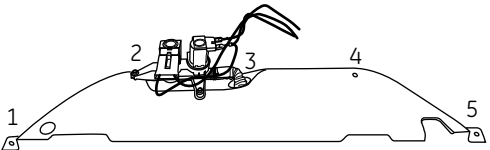


## 4 To Remove Cover/Lid Assembly:

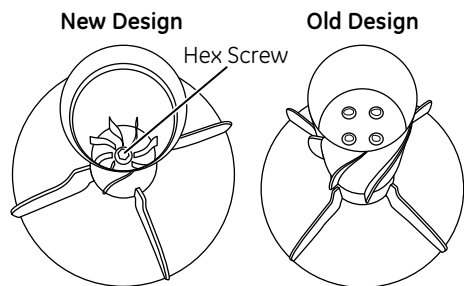
1. Remove front panel using step 3.
2. Remove two 1/4" hex screws on front of cabinet.
3. Reach under the lid assembly and locate lid switch. Squeeze lid switch latch in to release while gently pushing it upward. Guide through lid switch opening.
4. Remove cover/lid assembly.
5. Reverse procedure to reassemble.

## 5 To Remove Spin Basket:

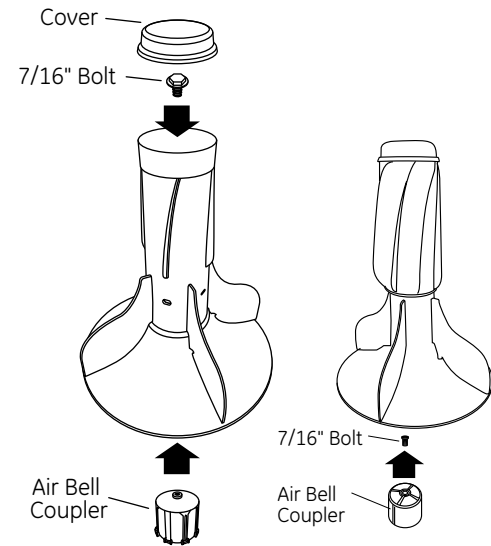
1. Follow steps 3 & 4.
2. Remove five hex screws from control panel bracket. Tilt bracket up and out of the way (Water valve is mounted to bracket).



3. Disconnect four dampening straps from tub attached by 5/16" hex screws.
4. Remove tub cover by lifting out eight molded tabs on tub cover, and pull cover off.
5. Remove agitator cap to determine attachment method. If 7/16" hex bolt is visible in bottom of barrel of agitator it must be removed in order to remove the agitator.



6. Remove agitator by grasping bottom and sharply pulling up (if hex bolt was removed in step 5, proceed to step 8).
7. Remove 7/16" hex bolt attaching air bell coupling to spline shaft assembly.



8. Remove left-handed 1-11/16" hub nut. This nut is aluminum, take care not to round the edges when removing or replacing.

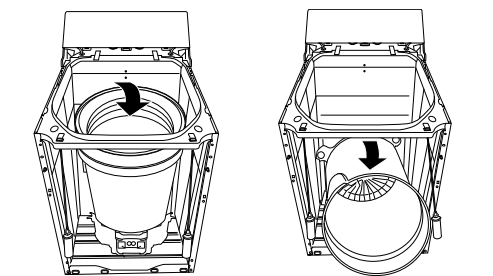


**TIP: To align agitator to replace, match grooves in air bell to grooves inside agitator. Fin is aligned with groove.**

## 6 To Service Tub/Motor Assembly:

1. Repeat steps 3, 4, 5.
2. Remove split ring and washer from shaft assembly.
3. Remove front rod and spring assembly (one at a time) by lifting motor tub assembly up to take weight off suspension spring at lower portion of rod. Pull the spring assembly out of the leg and platform assembly, and repeat for rear rod and spring assemblies. Allow them to hang freely. The front and rear rod and spring assemblies have different color spring housings and should not be switched.

4. The motor and tub assembly will now lean forward after both front rod and spring assemblies are unhooked at platform.
5. Disconnect motor harness connector, grounding wire to frame and pressure switch hose at take off.
6. Disconnect drain hose inlet (black hose) at tub.
7. Lift and push bottom of tub/motor assembly towards the rear of the cabinet, and roll tub out under top lip of cabinet.
8. Pull tub out of cabinet by lifting it over on its top as shown below.
9. Reverse procedure to reassemble.

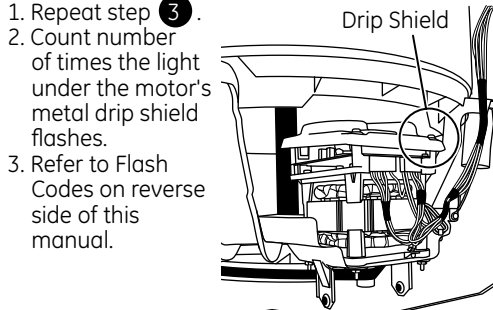


## 7 To Check Motor Status:

1. Repeat step 3.
2. Count number of times the light under the motor's metal drip shield flashes.
3. Refer to Flash Codes on reverse side of this manual.

## 8 Motor Removal/ Re-Installation:

1. Repeat step 3.
2. Remove belt by pushing down on belt near motor pulley while turning large pulley.
3. Loosen four 3/8" hex nuts enough to be able to pull the motor up and forward so the rear motor nuts clear the large pulley.
4. Remove the four motor bolts.
5. Disconnect wire harness.
6. Tilt top of motor away from you and pull out.

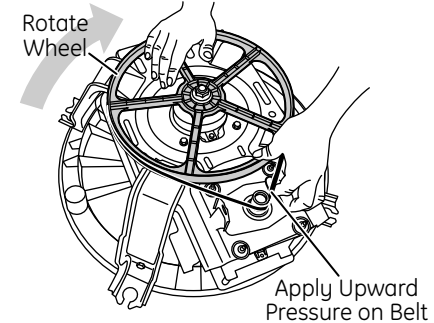


## To Re-Install Motor:

1. Set motor back on platform, with motor pulled all the way forward so locator pin is NOT seated in platform.
  2. Hand start the four motor nut.
  3. Push motor back so motor alignment pin drops into platform.
  4. Tighten motor nuts.
  5. Reconnect wire harness.
  6. Apply belt tool (WX05X10102) to motor pulley.
  7. Attach belt to large pulley using zip tie.
  8. With belt looped on drive pulley, rotate large pulley until the belt slack is taken up.
  9. Rotate pulley until belt is seated in motor grooves.
  10. Remove belt tool and carefully cut off zip tie.
  11. Put machine in spin for 60 seconds and then lift the lid. Ensure machine brakes to a complete stop under 7 seconds. If not, check lid switch and repeat brake check. **Brake function must be working.**
- TIP: MUST BE SURE BELT IS FULLY SEATED IN MOTOR PULLEY GROOVES.**

## 9 To Service Shaft Assembly:

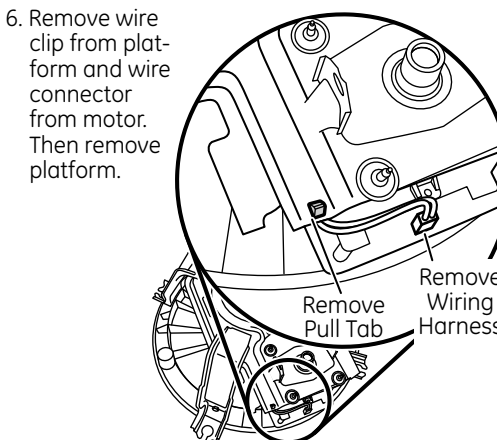
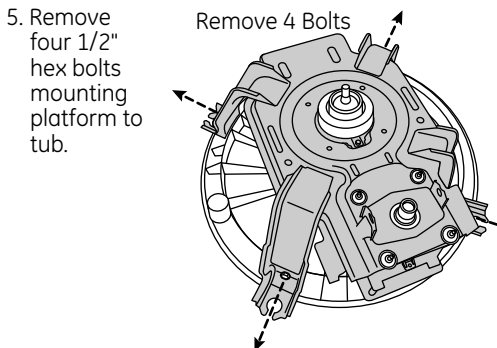
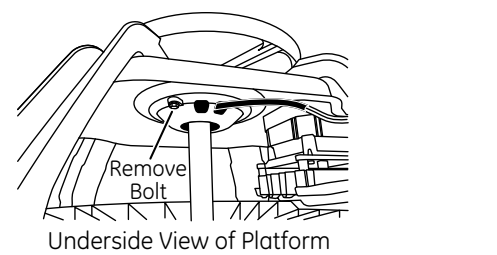
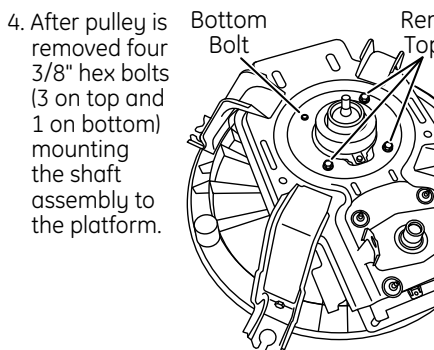
1. Repeat steps 3, 4, 5, 6.
2. Remove belt by pushing up on belt near motor pulley while turning.



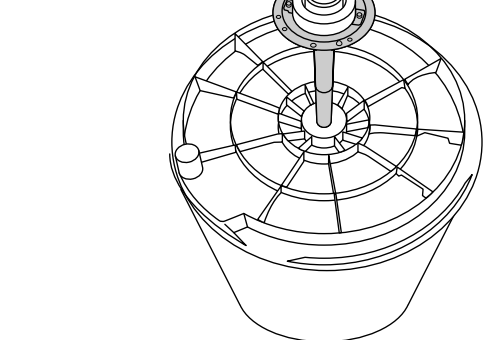
3. Remove large pulley by holding pulley with one hand and removing 3/4" nut.



4. After pulley is removed four 3/8" hex bolts (3 on top and 1 on bottom) mounting the shaft assembly to the platform.



7. Lift shaft assembly straight up and out.



8. Reverse steps 7-3 to re-install shaft assembly and platform. Follow step 6 under To Service Motor to install belt.

**TIP: Take care to align the two locating holes from shaft assembly to platform before reinstalling shaft assembly.**

**TIP: Take care not to get dirt/oil on pulley and shaft interface. If some present, wipe off with clean cloth.**

# 123C8453P001