

Technical Bulletin

MAYTAG®

Type Policy Letter
√ Service Information

Attention Service Managers
√ Service and Parts Managers

Models Luxury Built-in Side by Side Models

Issue Drip Pan Freeze Up

Warranty Standard product manufacturing warranty applies.

Action

Date: August 2006

No: TDR-0061-B
Page 1 of 2

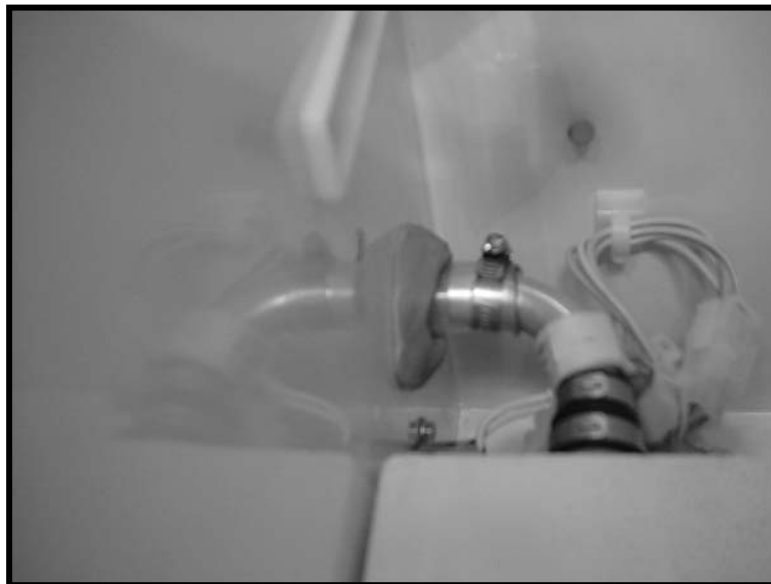
Brand

Jade
Jenn-Air

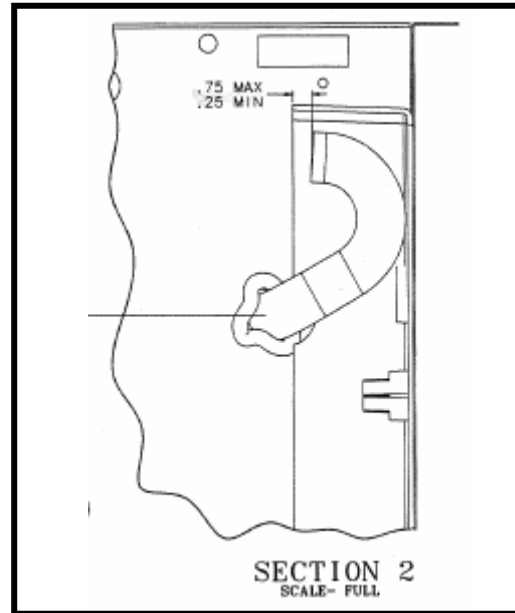
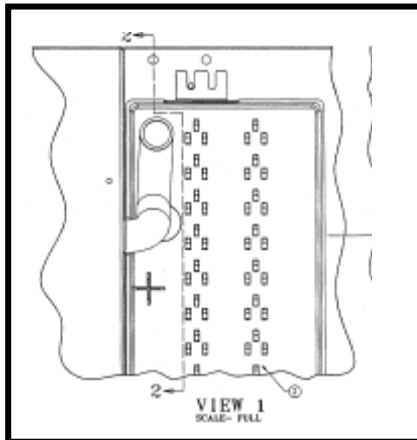
Product

Refrigerator

1. If the unit was produced in 6/2004 to 1/2005, check unit for leak in evaporator coil. Replace coil if leak is detected. Leaks will be located on evaporator coil tubing near the intersection with the defrost heater retaining clips. Leaks will be the size of pin holes.
2. Make sure unit is level left to right and slightly tipped backwards.
3. Check, and correct as necessary, any door seal breeches such as:
 - a. Breech from seal retreating from the front frame of the cabinet, especially areas half-way up the cabinet and freezer doors.
 - b. Breech from door alignment or bow.
 - c. Door "popping" open when the opposite door is closed.
4. Check dispenser models, and correct as necessary, any breeches found on the fountain door.
5. On the inside of the freezer compartment, seal the evaporator drain tube outlet and evaporator tubing inlet with butyl. Refer to picture. The evaporator tubing inlet is not shown in the picture.



6. Make sure the clear polyethylene drain tube is oriented correctly in the moisture pan, per drawing shown. The "u" shape should not be upside down and **oriented to have a liquid seal in the "u."**



7. Make sure the hose clamp is tight enough to prevent leaking. Tighten if necessary.
8. Make sure the aluminum drain tube lines up correctly with the hole in the freezer wall. If not, make sure the drip pan assembly is positioned against the front wall of the freezer. Also, make sure the aluminum drain tube is fully inserted into the foam tray assembly. If not, replace the drip pan assembly.
9. Check the resistance of the 3 different defrost heaters. Make sure all heaters are heating via service mode. Replace any suspect heaters or the entire drip pan assembly.
10. Make sure the aluminum drain tube heater is snug against the tube. Replace if necessary.
11. Check for delaminating of the drip pan heater from the drip pan. Replace the drip pan assembly as necessary.
12. Disconnect the defrost thermistor in the evaporator area. Add foil tape to the front and back of the foam tray as shown in the picture.

